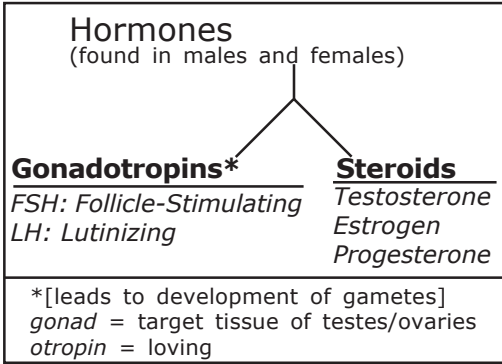


Reproductive System



Menstrual Cycle

Hypothalamus causes release of hormones (gonadotropins) [GnRH]

Hormones enter **Blood Stream**

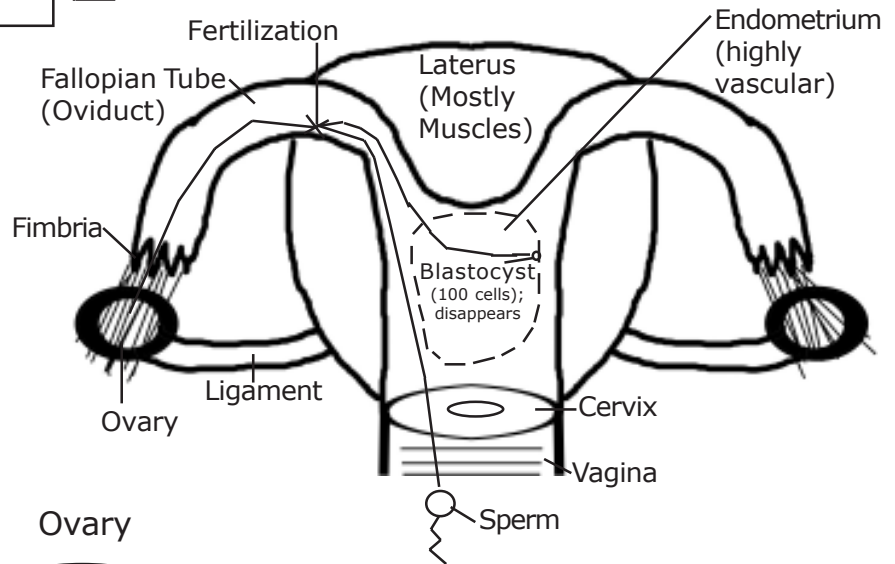
Pituitary Gland secretes hormones (FSH and LH) into blood stream (toward ovaries) that stimulate 2 types of cell:

Follicle cells, which produce steroids which increase amounts of estrogen only after ovulation and encourages progesterone production by Corpus Luteum

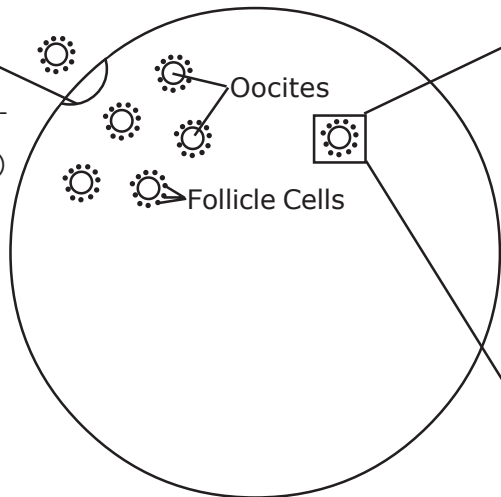
Oocytes, which mature into ova

Ectopic Pregnancy -

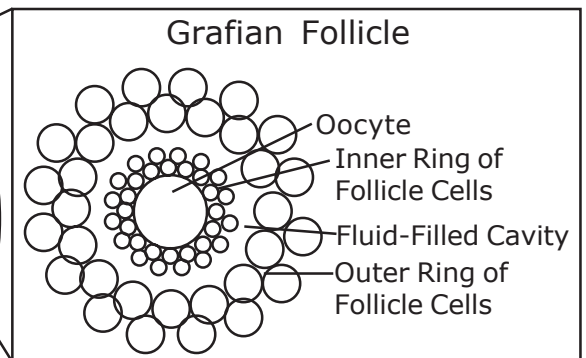
Implantation in fallopian tube (*tubular pregnancy*) or another place outside uterus (i.e. abdominal cavity - *abdominal pregnancy*)



Corpus Luteum
(temporary gland produces progesterone for 10-14 days after ovulation)



Graafian Follicle



Gametogenesis

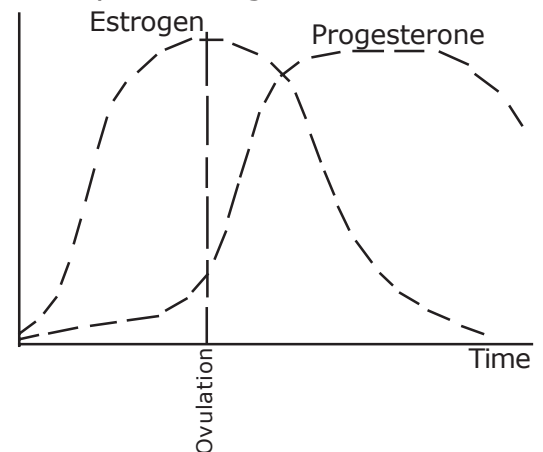
Male - Spermatogenesis
Female - Oogenesis

Meiosis (reduction division)

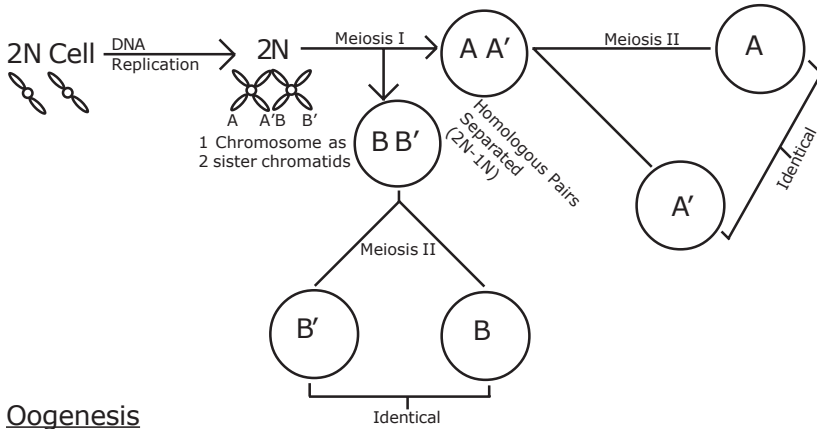
Diploid Cells - 2N; Chromosomes in 22 homologous pairs + 1 other pair (sex cells) → Haploid Cells - 1N; Gametes

1 Sperm + 1 Ovum → Fertilization → 2N (Zygote) → Mitosis → Billions of Cells (All 2N)

Example of Negative Feedback



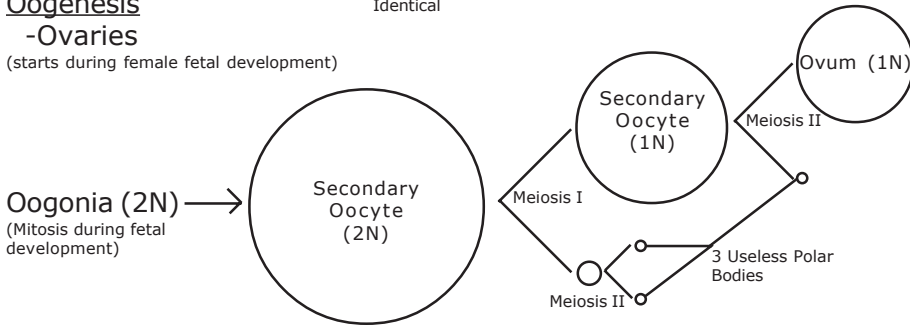
Meiosis (1-4 cells)



Oogenesis

-Ovaries

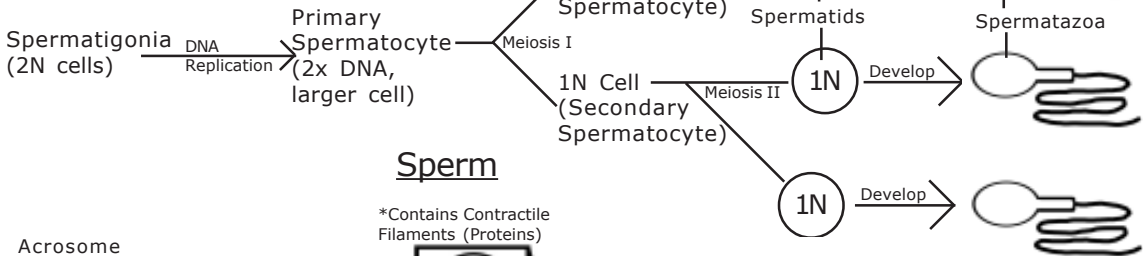
(starts during female fetal development)



Spermatogenesis

-Testes

-Seminiferous Tubules



Sperm

